



**CLOUDSIDE**

EVERYTHING IS UP

CELEBRATED AS THE REAL ESTATE ARM OF REGIONALLY-  
ACCLAIMED GROUP

## **INTRO INVESTMENTS HOLDING**

INTRO Investments Holding, established in the 1980s, is a privately owned Egyptian enterprise led by the Abbas family. Over the decades, the company's shareholders and partners have achieved sustained success by building strong alliances, providing strategic support to its subsidiaries, and synergizing between the companies to drive collective growth.

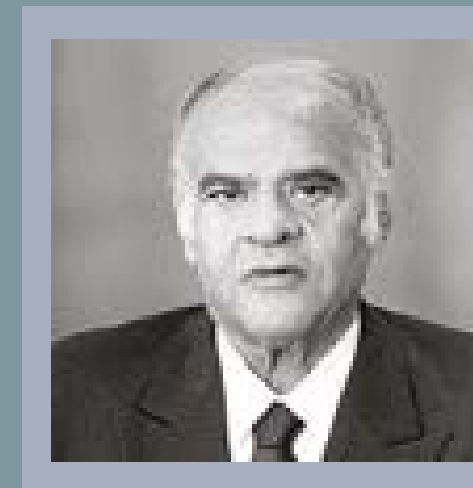


# TOP MANAGEMENT

## MESSAGE FROM THE FOUNDER

Successful businesses are built upon solid foundations of dedication, precise acumen and clear ambition. INTRO Group started laying the groundwork for this foundation over 50 years ago. This strong insight and ambition kept us very focused on dedicating ourselves to maintaining superior quality control and exploiting efficient manufacturing. The result of which is today INTRO Holding, a true business conglomerate. Over the last five decades, we have pursued the dream of a solid, successful and influential Egyptian business that holds its own within the global market.

MAMDOUH ABBAS



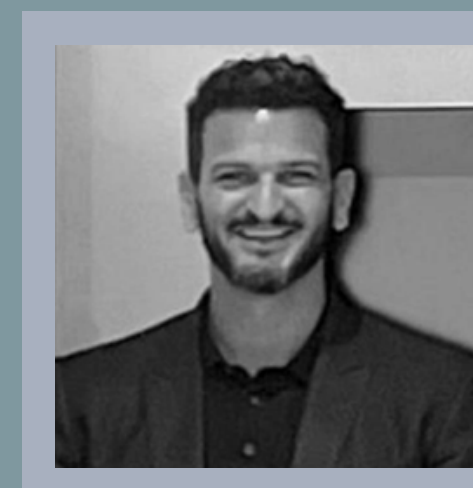
MR. MAMDOUH  
ABBAS  
Founder



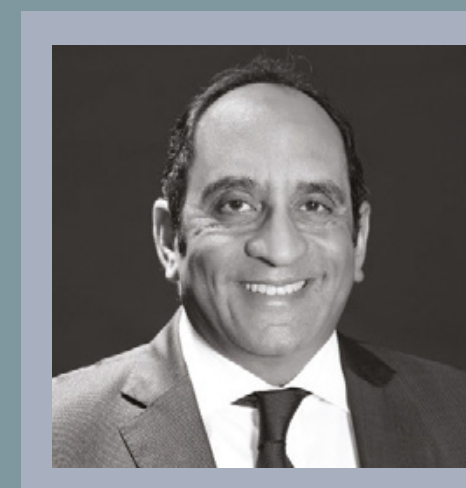
MR. AYMAN  
ABBAS  
Chairman of INTRO  
Investments Holding



MR. MOHAMED  
FAROUK  
CEO of ADES



MR. MOHAMED  
ABBAS  
Chairman & CEO of  
INTRO Sustainable Resources



MR. HATEM  
SOLIMAN  
Vice-Chairman & CEO  
of INTRO Investments Holding

# INTRO

Investments Holding 50 Years



# HILLS DEVELOPMENTS

Hills Developments are redefining real estate with a focus on innovation and excellence.

As part of the proud family of INTRO Group, the esteemed egyptian entity since 1980, and with the support of Hills Construction since 2015, we pride ourselves in creating fresh and inspiring living spaces. It gives us the ability to convert visionary ideas into reality, therefore creating a unique identity in the market.





**CLOUDSIDE**

EVERYTHING IS UP

  
**CLOUDSIDE**



  
**CLOUDSIDE**  
EVERYTHING IS UP

# CLOUDSIDE CONCEPT

## EVERYTHING IS UP

Cloudside unveils the essence of Everything is Up with a revolutionary concept in residential living – the interconnected rooftops, transforming them into a vast communal haven that elevates lifestyle experiences to unprecedented levels. Imagine a home where your living space extends beyond the confines of your apartment, offering you an exclusive gateway to a rooftop paradise.



# CONNECTED ROOFTOPS

Owning a unit at Cloudside means more than simply having a place to live – it's also a lifestyle. Our rooftop living spaces offer a complete experience with a variety of amenities. From extraordinary club house and lounges to recreational and entertainment spaces, the rooftop, in essence, is an extension of your living space that enhances your day-to-day life. It is a thoughtful design that ensures each living experience in the building enjoys an elevated lifestyle beyond just a home, a complete living experience.



# ABOUT THE LOCATION

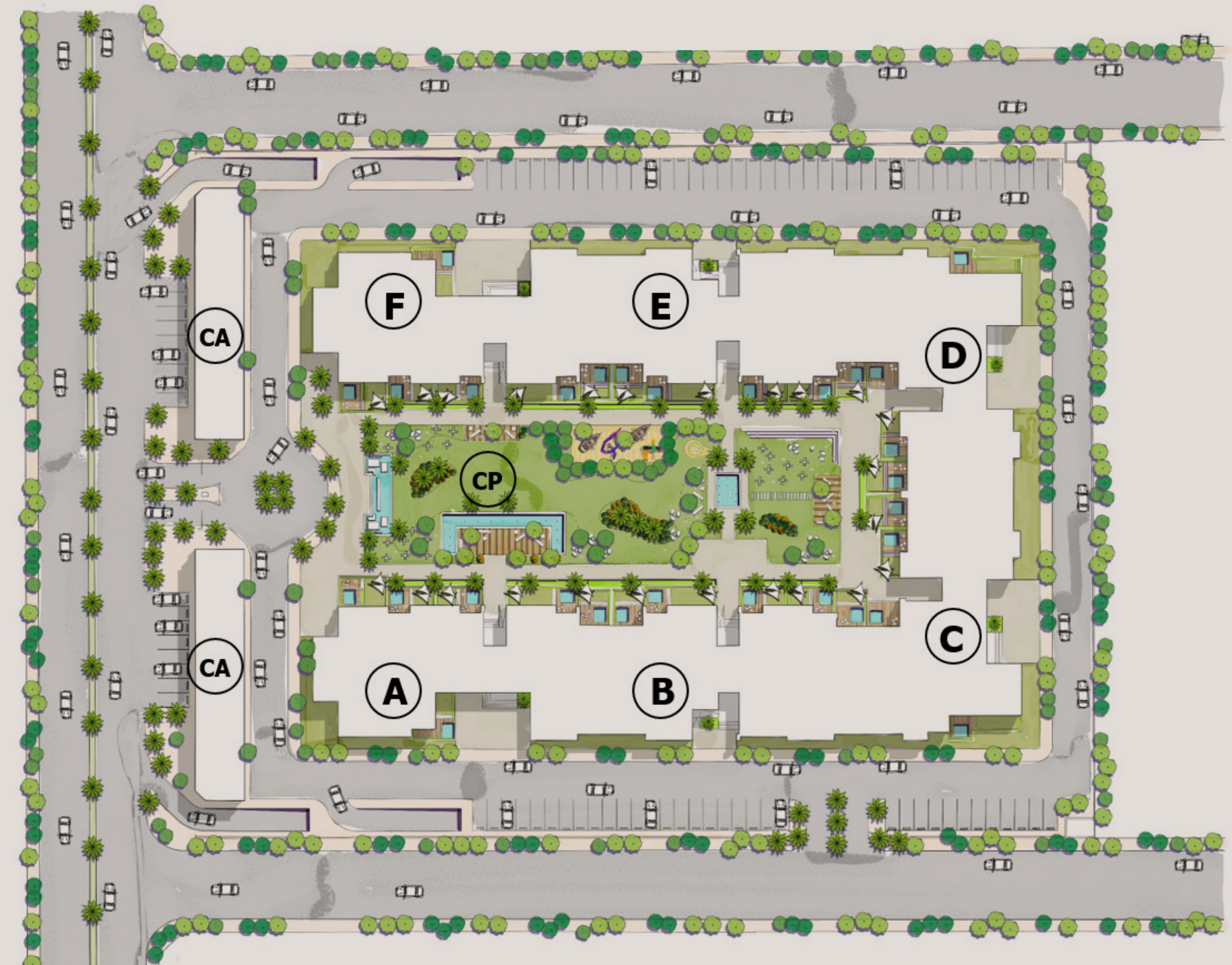
Cloudside boasts a prime location that offers a peaceful retreat amidst El-Sheikh Zayed's bustling life, with seamless access to major landmarks.

[Click to view on Google Maps](#)



# PROJECT MASTER PLAN

- CP - Central Park
- CA - Cloudside Avenue
- Jogging Track
- Parking Area
- Kids Area
- Main Gate
- Water Feature



Disclaimer  
Please note: All images in this brochure are for illustrative purposes only. Actual appearance and specifications may vary.  
The developers reserve the right to make changes to designs, materials, and features as necessary.

# SIGNATURE GROUND UNITS

Our signature ground units feature private gardens and overlook vast green spaces. Regardless of their size, each unit can include its own private pool, adding a prestigious touch. These exceptional features make our ground units a standout choice, offering a unique and upscale living experience at Cloudside.



# COMMERCIAL AND ADMINISTRATIVE AVENUE

Cloudside is designed to cater to both your lifestyle & business needs. Our project integrates commercial and administrative spaces, offering a dynamic mix of retail outlets, office spaces, and essential services. Such a structure provides convenience & enhances the overall community experience.



# SERVICES AND AMENITIES

## CRAFTING A LIFESTYLE ABOVE ALL ELSE

Welcome to a community where every detail is designed to meet everyone's needs. Dive into our refreshing pools, jog along scenic paths, or work out in our well-equipped gym. Our co-working spaces are perfect for productivity, while the lounge area offers a relaxing escape. Enjoy films in both outdoor and indoor cinemas, and let your children delight in their own dedicated play areas. Savor your favorite drink in our cozy cafes. Each amenity at Cloudside is thoughtfully created to enrich your lifestyle and foster a vibrant, engaging community.

# ROOF TOP GYM



# ROOF TOP POOLS



# ROOF TOP INDOOR CINEMAS



# ROOF TOP OUTDOOR CINEMAS



**ROOF TOP CAFE**



# CO-WORKING SPACE



# THE LOUNGE AREA



OTHER FACILITIES  
**KIDS AREA**



OTHER FACILITIES

# JOGGING TRACK



## FLOOR PLANS

# DIVERSIFIED UNIT SPACES

Cloudside accommodates various preferences and lifestyles, across 6 buildings. From 1 bedroom apartments that are ideal for young professionals and newlyweds to spacious 3 bedrooms homes perfect for growing families. We have the suitable space to fit each lifestyle.

# FLOOR PLAN

1 BDR - AREA (70-95)M<sup>2</sup>

## 1 BEDROOM APARTMENT

AREA RANGE : 70 - 95 m<sup>2</sup>

1. RECEPTION	3.70m X 5.35m & 2.08m X 2.50m
2. TERRACE	3.80m X 1.50m
3. KITCHEN	3.27m X 2.50m
4. BEDROOM	3.68m X 3.90m & 1.10m X 2.00m
5. DRESSING	2.48m X 2.00m
6. BATHROOM	2.48m X 1.80m
7. LAUNDRY	1.10m X 1.80m



# FLOOR PLAN

2 BDR - AREA (114-156)M<sup>2</sup>

## 2 BEDROOM APARTMENT

AREA RANGE : 114 - 156 m<sup>2</sup>

1. RECEPTION	3.70m X 6.30m & 3.35m X 2.95m
2. TERRACE	3.55m X 1.25m
3. KITCHEN	2.70m X 2.95m
4. GUEST TOILET	1.95m X 1.20m
5. MASTER BEDROOM	3.68m X 3.80m & 1.10m X 3.80m
6. DRESSING	2.58m X 2.00m
7. BATHROOM	1.63m X 1.80m & 0.85m X 1.60m
8. BEDROOM 1	3.65m X 3.40m & 1.10m X 1.70m
9. DRESSING	2.45m X 1.70m
10. BATHROOM	2.95m X 1.45m
11. MAID'S ROOM	1.70m X 2.50m
12. MAID'S TOILET	1.30m X 1.60m
13. LOBBY	1.30m X 1.10m & 2.35m X 1.10m
14. ENTRY CLOSET	0.90m X 1.20m



# FLOOR PLAN

3 BDR - AREA (170-225)M<sup>2</sup>

## 3 BEDROOM APARTMENT

AREA RANGE : 170 - 225 m<sup>2</sup>

1. ENTRANCE	1.40m X 1.60m & 1.15m X 3.25m
2. RECEPTION	7.45m X 4.85m
3. TERRACE	1.70m X 2.20m
4. GUEST TOILET	1.20m X 2.40m
5. KITCHEN	5.00m X 2.35m & 2.00m X 2.50m
6. MASTER BEDROOM	3.70m X 3.40m & 1.10m X 4.60m
7. BATHROOM	2.20m X 1.60m & 0.90m X 1.55m
8. DRESSING	2.50m X 0.60m & 2.05m X 0.60m
9. TERRACE	3.70m X 1.35m
10. BEDROOM 1	3.90m X 3.95m & 1.10m X 1.80m
11. BATHROOM	2.70m X 1.70m
12. BEDROOM 2	3.30m X 3.70m & 1.10m X 1.80m
13. BATHROOM	2.10m X 1.70m & 0.60m X 0.80m
14. MAID ROOM	1.60m X 2.40m
15. MAID'S TOILET	1.50m X 1.10m
16. CORRIDOR	1.10m X 4.85m



# INTERIOR STYLE

We know how important it is for your home to match your modern lifestyle. Our contemporary finishing packages are designed to take the stress out of decorating, offering you a smooth move-in experience. With high-quality materials and precision in every detail, each apartment is finished to the highest standard. Enjoy the elegance and comfort you've always desired, right from day one.

# APARTMENT 1



# APARTMENT 1



# APARTMENT 2



# APARTMENT 2



# APARTMENT 3



# APARTMENT 3



# APARTMENT 3





Contact Details:

**TELEPHONE:**

(+2) 02-38507714 / (+2) 02-38506614

**ADDRESS:**

Third floor - Building A, Twin Towers,  
Zayed City - Giza - Egypt

 1 5 8 0 8

[www.hills-developments.com](http://www.hills-developments.com)